

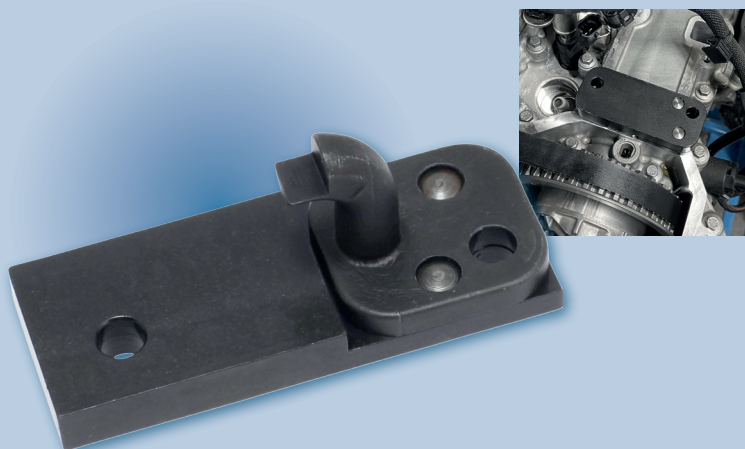
# TOOLS FOCUS

NEW TO RANGE WORKSHOP ESSENTIALS



Designers and manufacturers of  
Automotive Special Service Tools

## AUGUST 2024



### AST5299 EXHAUST CAMSHAFT LOCKING TOOL - 1.2 GDI PURETECH EB2 - CITROËN - PEUGEOT - DS - OPEL/VAUXHALL

AST5299 is an updated tool which came into production for vehicles (from 2020). The tool sits in the oil way of the exhaust camshaft, which can then be bolted in place to lock the exhaust camshaft. This procedure will render the need to remove the vacuum pump, saving time.

Models: **Citroën:** Berlingo IV, C3 Aircross, C3 IV, C4 Cactus, C4 III, C4 Space Tourer/Grand Space Tourer, C5 Aircross, **Peugeot:** 2008, 208, 3008, 308, 5008, 508, Partner IV, Rifter, **Vauxhall/Opel:** Combo-E (X19)(18-), Combo-E Life (X19)(18-), Crossland X (P17)(17-), Grandland X (A18)(17-)

Equivalent to OE reference: 0109-2E



### AST4750 5-POINT TAMPER PROOF SOCKET SET

To cover 5-point tamperproof fasteners on ECU, AC Units, Airflow/Mass Sensors, and Injection Pumps.

Models: **BMW, Fiat, Mercedes-Benz, Peugeot, Renault, Rover, Toyota, VAG, Vauxhall/Opel**

Set AST4750 comprises 7-bit sizes: TS10, TS15, TS20, TS25, TS27, TS30 & TS40 sizes plus 1/4" drive bit holder.



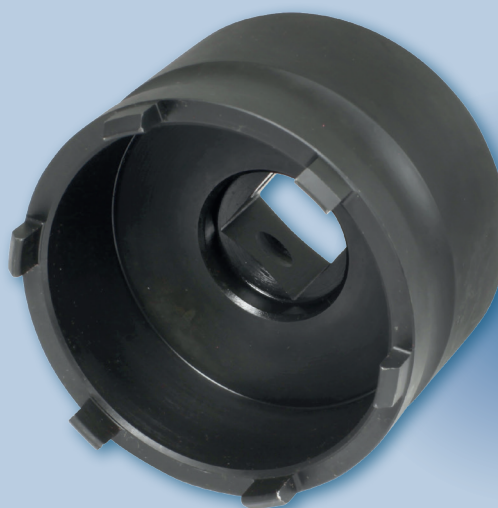
### AST6089 OIL FILTER WRENCH - 76MM X 12 FLUTE (1/2" SQ. DRIVE) - 1.2GDI EB2 PETROL AND 1.5DCI K9K DIESEL - CITROËN/ PEUGEOT - FORD - RENAULT - DACIA - MERCEDES-BENZ - NISSAN - VAUXHALL/OPEL

For the removal of 76mm diameter spin-on oil filters in a wide range of vehicles.

Handy tool featuring 12 flutes that match the indentations formed in the sides of the oil filter.

Connection between filter and wrench allows torque to be applied to the filter without damaging it.

1/2" square drive - can be used with a standard 1/2" ratchet or extension bar.



### AST6169 HUB NUT SOCKET - 74MM (3/4" SQ. DRIVE) - VOLKSWAGEN CRAFTER

Has an outer diameter of 74mm with 6 lugs for positive location into the castellated nut of the twin wheel rear hub nut. Suitable for light commercial vehicles.

Applications include: **VW Crafter and LT (06-17), Mercedes Sprinter (06-19), Opel/Vauxhall Movano-B (10-), Renault Master III (10-), Nissan NV400 (11-16)**

Equivalent to OEM Tool references: VAG T50017, CH-50112, 06 589 00 07 00



[www.asttools.co.uk](http://www.asttools.co.uk)



+44 (0)1527 522550



[sales@asttools.co.uk](mailto:sales@asttools.co.uk)