

# TOOLS FOCUS

NEW TO RANGE WORKSHOP ESSENTIALS

FEBRUARY 2025



Designers and manufacturers of  
Automotive Special Service Tools



## AST6113 HEX SOCKET BIT SET 30pc 1/2" SQ DRIVE

Contents:

Length 55mm: H5, H6, H7, H8, H10, H12, H14, H17, H19

Length 100mm: H5, H6, H7, H8, H10, H11, H12, H13

Length 140mm: H5, H6, H7, H8, H10, H12, H14

Length 200mm: H5, H6, H7, H8, H10, H12



## AST6100 OIL DRAIN PLUG THREAD REPAIR KIT - 64 pcs

Includes Special Taps and Replacement Sump Plugs / Washers for the following sizes:

M13 x 1.5 Oil Drain Plug Repair Kit - for use on M12 Threads

M15 x 1.5 Oil Drain Plug Repair Kit - for use on M14 Threads

M17 x 1.5 Oil Drain Plug Repair Kit - for use on M16 Threads

M20 x 1.5 Oil Drain Plug Repair Kit - for use on M18 Threads



## AST6069 HOSE CLIP PLIERS - FUEL LINES / SMALL HOSES - 'CLIC-CLIC' HEAVY DUTY

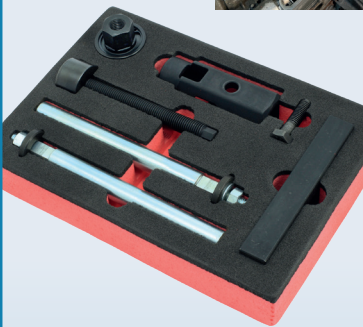
Applications include:

Audi, Citroën, Mercedes Benz, Peugeot, Renault, Seat, Skoda, Vauxhall/Opel, Volkswagen



## AST5254 Stretch Belt (Belt-in-Oil) Installation Tool - 1.0 & 1.2 EB0/ EB2 Engines - Citroën - Peugeot - DS - Opel/Vauxhall - Toyota

Equivalent OE references:  
0109-1B, EN-52112-2



## AST6225 DIESEL INJECTOR REMOVAL TOOL - 2.0TDCi FORD ECOBLUE

Designed to pull out mildly seized Ford EcoBlue diesel injectors in one piece.

As per Ford General Service Bulletin FGSB-7024, applied torque must not exceed 25Nm.

Equivalent to OE reference: 303-1706

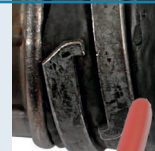


## AST6017 SPARK PLUG 'THIN WALLED' SOCKET - 14mm A/F BI HEX

Applications:

BMW Direct Injection petrol engines: N43, N53, N54

This socket can also be used on engines with similar access issues, such as Citroën, Peugeot, Renault, and Mercedes.



## AST6197 CHARGE AIR HOSE CLAMP PLIERS - 1.9 / 2.0 TDi - AUDI - SEAT - SKODA - VOLKSWAGEN

Designed to safely release the high-tension spring clamp.

The addition of the integrated locking device secures the clamp in the open position.



## AST6237 FUEL FILTER SOCKET - 2.0 HDI DW10 ENGINES - 27MM X 1/2" DRIVE - CITROËN - FORD - MITSUBISHI - PEUGEOT - VOLVO

Suitable for removing and installing the diesel fuel filter housing on vehicles fitted with 2.0 HDi DW10 engines.



www.asttools.co.uk



+44 (0)1527 522550



sales@asttools.co.uk