

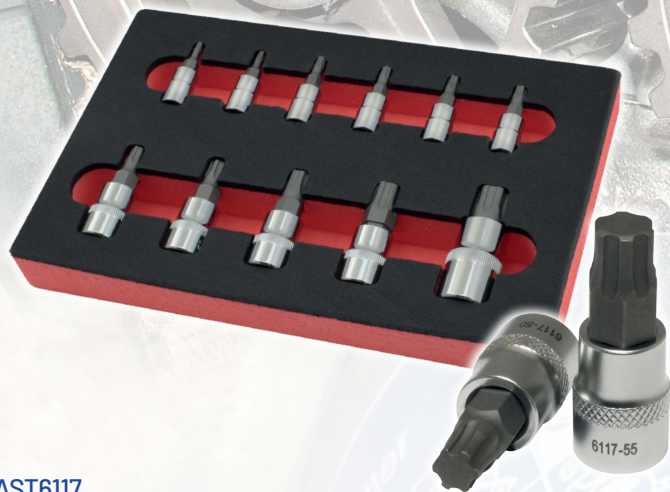
TOOLS FOCUS

NEW TO RANGE WORKSHOP ESSENTIALS

NOVEMBER 2023



Designers and manufacturers of
Automotive Special Service Tools



AST6117

TRX-PLUS MALE 'IP' SOCKET SET - 11 PC - BMW - MERCEDES BENZ - MINI - NISSAN - PSA

TRX-Plus Sockets have been developed from the Torx form and are designed to provide a more positive engagement and better drive, while minimising wear of the drive bit. This is particularly useful in high volume applications such as vehicle production assembly lines where both Male and Female form Torx Plus fasteners are used.

Individual sockets within the set: IP10 x 1/4" dr., IP15 x 1/4" dr., IP20 x 1/4" dr., IP25 x 1/4" dr., IP27 x 1/4" dr., IP30 x 1/4" dr., IP40 x 3/8" dr., IP45 x 3/8" dr., IP50 x 3/8" dr., IP55 x 3/8" dr., IP60 x 1/2" dr.



AST5254

STRETCH BELT INSTALLATION TOOL (COOLANT PUMP ELASTIC DRIVE BELT) 1.0 & 1.2 'EB0/EB2' PETROL ENGINES - PSA - DS - VAUXHALL/OPEL - TOYOTA

Stretch belt systems do not employ a traditional sprung tensioner to maintain tension to the belt drive system. Instead, the elastic 'stretch' belt is shorter than the span between the pulleys on which it runs.

The tool gently guides the belt into the grooves of the coolant pump pulley, ensuring correct installation while reducing the risk of damage to the drive belt.

Typical applications: Engines: 1.0, 1.1, 1.2 VTi, THP.

Models: **Peugeot:** 108 / 208 / 301 / 308 / 408, **Citroen:** Berlingo, DS3, C3, C3II, C4II, **Opel:** Crossland X, Grandland X, **Toyota:** Aygo

Equivalent OE references: 0109-1B, EN-52112-2



AST5179

OIL FILTER CAP WRENCH - 64,5 I/D X 14 FLUTES 3/8" SQ. DRIVE - TOYOTA / LEXUS / LOTUS

Applications include: **Lexus** CT (10-19), **Lotus** Elise (07-10), **Toyota** Auris (07-19), Avensis (08-19), Corolla (06-16), Prius/Prius Plus (-9-19), RAV 4 (08-13), Yaris (07-18)

Oil Filter Cap references: 015620-37010, 0156237010



AST6160

5:1 TORQUE MULTIPLIER SET - 1.0 ECOBOOST & 1.1 PETROL ENGINES - FORD

The 5:1 Torque Multiplier Set has been developed to enable correct removal and installation of the Crankshaft Pulley Bolt on the Ford 1.0 EcoBoost engine. The crankshaft pulley bolt is tightened to a very high torque.

- 5:1 Torque ratio, matches OE specification
- Crankshaft pulley bolt is tightened in stages to achieve a final high torque loading
- Ensures crankshaft pulley bolt is tightened correctly every time
- No need to convert any torque figures or angular inputs
- Max Input torque 300Nm - through 1/2" female drive
- Max Output torque 1500Nm - through 3/4" male drive

Typical applications: 1.0 EcoBoost Belt-in-oil (2012-2018), 1.0 EcoBoost Chain (2017) and 1.1 Naturally aspirated engines

Equivalent to OE References: 303-1611, 303-1611-01, 303-1611-02



www.asttools.co.uk



+44 (0)1527 522550



sales@asttools.co.uk